

PassleaderVCE

PassLeaderVCE

HOME

ALL VENDORS

★ GUARANTEE

? FAQ

TESTIMONIALS

CART (0)

Pass Your Next Certification Exam Fast!

Wonderful Certification Exam Guide and Exam Dumps - PassLeaderVCE

365 days free updates. First attempt guaranteed success.

Select a vendor...

Select an test...

Your email address

Free Download Demo

We're not the only ones **happy** about PassLeaderVCE Practice Material ...

49316+ customers in 100+ countries use PassLeaderVCE Test Engine. Meet our customers.

VOREED

GetCustom

JET ORANGE

iCompany

Paradoxx

iMessenger



<http://www.passleadervce.com/>

Wonderful Certification Exam Guide and Exam Dumps- PassLeaderVCE

Exam : HP0-Y43

Title : Implementing HP Network
Infrastructure Solutions Exam

Vendors : HP

Version : DEMO

1. A customer requires an HP FlexCampus solution with a core that scales to 40/100G. Which HP switch fabric meets this need?

- A. the 7500's CLOS switch fabric
- B. the 10500's CLOS switch fabric
- C. the 7500's crossbar switch fabric
- D. the 10500's crossbar switch fabric

Answer: B

2. What is the role of neighbor solicitation (NS) messages in the autoconfiguration of an IPv6 address.?

- A. An IPv6 node sends an NS message to inform a node undergoing autoconfiguration that it is already using a particular address.
- B. An IPv6 node sends an NS message for its tentative address to determine whether another node is using it.
- C. An IPv6 node sends an NS message for the global prefix to prompt other IPv6 nodes to advertise the addresses that they are using on that prefix.
- D. An IPv6 node sends an NS message to prompt an IPv6 router on the link to advertise the global prefixes associated with the link immediately.

Answer: B

3. Which switch is best suited to act at the edge of a medium to large HP FlexFabric solution?

- A. 10500
- B. 5500
- C. 9500
- D. 5830

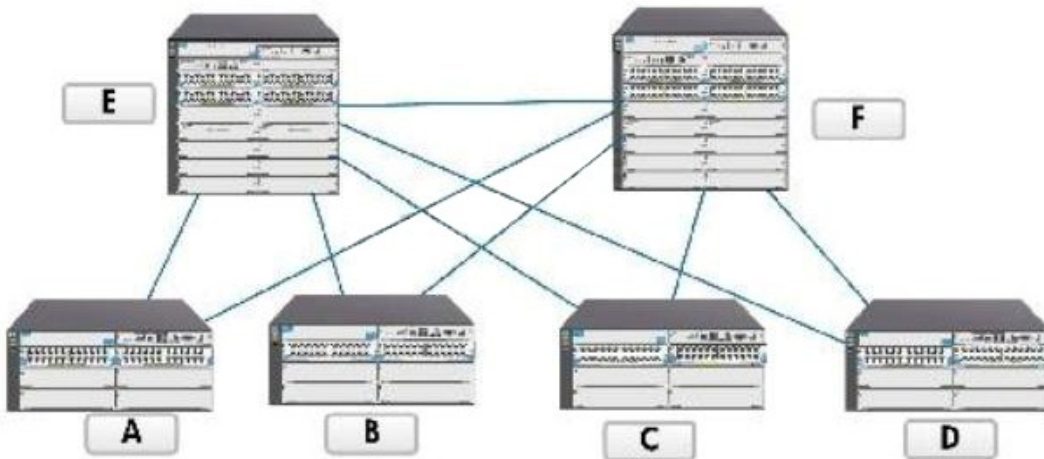
Answer: D

4. How can a high density of ports and high throughput at the core of an HP FlexNetwork save customers money?

- A. Intelligence is offloaded from the edge switches, enabling customers to save money on the most numerous switches in their solutions.
- B. The customer can combine the data center and campus LAN core into a single entity, reducing power and cooling costs.
- C. The customer no longer needs to deploy modular switches at the distribution level and the edge, deploying more cost-effective stackable switches instead.
- D. The architecture can be simplified, eliminating expensive distribution devices and reducing power and cooling costs.

Answer: D

5. View the exhibit.



The exhibit shows a network with HP 5400 zl and 8200 zl switches throughout the core and edge. What is one advantage of implementing routing on edge switches?

- A. Typically, it is easier to implement user-based VLAN assignments.
- B. The topology has higher redundancy because edge switches can take over routing roles when necessary.
- C. Typically, the network can use fewer total VLANs when edge switches implement routing.
- D. Typically, it is easier to ensure that routed links between edge and core switches are fully utilized.

Answer: D

6.A company has a network that includes HP 5800 and 12500 switches. Usage demands on the company's FTP servers have increased, causing performance issues during peak usage times. While analyzing link utilization, the network administrator noticed that the most heavily utilized links experience bursts of congestion, causing them to drop traffic. The links then experience brief periods of low utilization followed by another burst of congestion. This pattern continues periodically throughout the peak utilization time.

What should the network administrator do to attempt to create a more efficient traffic pattern on these links?

- A. Configure an outbound traffic policing policy on the ports in question, setting the CIR at about sixty percent of the ports' capacity and the PIR at about eighty percent.
- B. Apply Weighted Fair Queuing (WFQ) or Weighted Round Robin (WRR) scheduling in preference to Strict Priority (SP) scheduling on the ports in question.
- C. Configure inbound traffic policing policies on ports at the core, setting the CIR at about sixty percent of the ports' capacity and the PIR at about eighty percent. Apply outbound generic traffic shaping (GTS) on ports facing the core ports, setting the CIR equal to the CIR on the core ports.
- D. Apply a WRED table to the ports in question, optionally adjusting the table values to drop lower priority traffic first.

Answer: D

7.View the exhibits.

Exhibit 1

The frame has these characteristics:

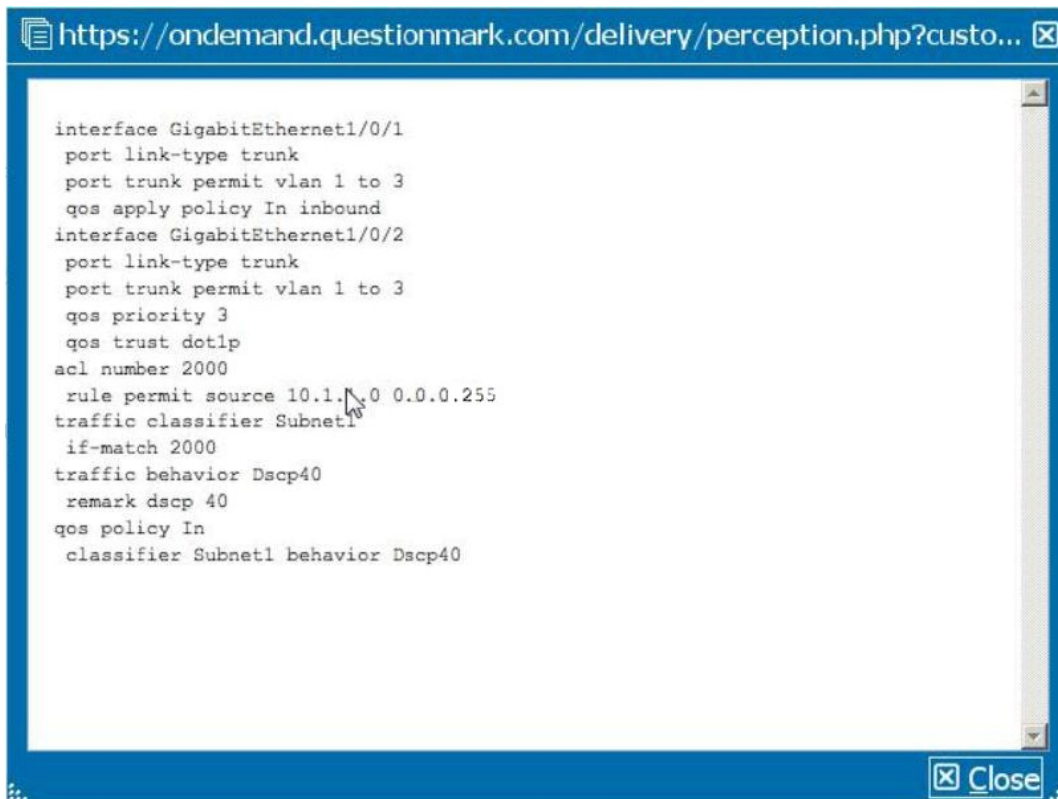
-VLANID = 3

-802.1p = 3

-DSCP=32

-Source IP address = 10.1.1.5

Click here for Exhibit 2



```

interface GigabitEthernet1/0/1
 port link-type trunk
 port trunk permit vlan 1 to 3
 qos apply policy In inbound
interface GigabitEthernet1/0/2
 port link-type trunk
 port trunk permit vlan 1 to 3
 qos priority 3
 qos trust dot1p
acl number 2000
 rule permit source 10.1.1.0 0.0.0.255
traffic classifier Subnet1
 if-match 2000
traffic behavior Dscp40
 remark dscp 40
 qos policy In
 classifier Subnet1 behavior Dscp40

```

The frame shown in Exhibit 1 arrives on an HP 5800 switch's GigabitEthernet port 1/0/1. QoS maps are at their default settings. Based on the configuration shown in Exhibit 2, to which queue is the outbound packet assigned?

- A. 2
- B. 3
- C. 4
- D. 5

Answer: D

8.View the exhibit.

```

acl number 3000
 rule permit udp destination-port eq 55555
traffic classifier ClassA
 if-match acl 3000
traffic behavior DSCP32
 remark dscp 32
traffic behavior 1p4
 remark 1p 4
 qos policy Policy1
 classifier ClassA behavior DSCP32
 qos policy Policy2
 classifier ClassA behavior 1p4
interface Gigabit1/0/1
 qos trust dot1p
 qos priority 3

```

A network administrator wants to configure an HP 5800 switch to place all incoming traffic on the GigabitEthernet 1/0/1 port in priority queue 3. However, one exception applies. All traffic incoming on that port that is destined to UDP port 55555 should be forwarded in priority queue 4 and marked with DSCP 32.

Based on the current configurations shown in the exhibit, which further steps must the network administrator perform? (Select two.)

- A. Configure port GigabitEthernet 1/0/1 to trust DSCP
- B. Apply QoS policy Policy1 as an inbound policy on port GigabitEthernet 1/0/1
- C. Apply QoS policy Policy2 as an inbound policy on port GigabitEthernet 1/0/1
- D. Create a QoS map that maps DSCP 32 to priority queue 4
- E. Undo QoS trust on port GigabitEthernet 1/0/1

Answer: B,E

9. A company has a service level agreement (SLA) with its service provider. The SLA specifies a 2 Mbps committed information rate (CIR) and 20 KB committed burst size (CBS). Lately, during peak usage times, the company has been experiencing brief periods of poor performance on its external connection (GigabitEthernet port 2/0/1 on an HP 5800 switch).

How can the network administrator configure the Comware switch to address this problem?

- A. Configure a traffic classifier that selects all traffic and a car traffic behavior that sets the CIR to 2 Mbps and the CBS to 20 KB. Create a QoS policy that maps the classifier to the action and apply this policy as an inbound policy on port GigabitEthernet 2/0/1.
- B. Enable Strict Priority (SP) scheduling on port GigabitEthernet 2/0/1 and ensure that all inbound traffic is marked with the correct priority.
- C. Configure generic traffic shaping (GTS) on the GigabitEthernet port 2/0/1, setting the CIR to 2 Mbps and the CBS to 20 KB.
- D. Configure a traffic classifier that selects all traffic and a car traffic behavior that sets the CIR to 2 Mbps and the CBS to 20 KB. Create a QoS policy that maps the classifier to the action and apply this policy as an outbound policy on port GigabitEthernet 2/0/1.

Answer: C

10. A network includes a mix of IGMPv2 and IGMPv3 endpoints and must support the following source specific multicasting applications:

-Source: 10.1.4.2 and Group: 232.0.5.5

-Source: 10.1.4.12 and Group 232.0.6.6

The network is already implementing PIM-SM and IGMPv3. In order to support these applications, the HP 10500 switches that act as routers for the endpoints in question must support another feature. Which step must the network administrator perform on each of these switches?

- A. Create an SSM policy that includes 232.0.5.5 and 232.0.6.6 within its range
- B. Enable IGMPv2 backward compatibility mode
- C. Configure two SSM maps, each of which maps a source to its multicast group
- D. Enable PIM SSM on the interfaces that connect to the endpoints

Answer: C